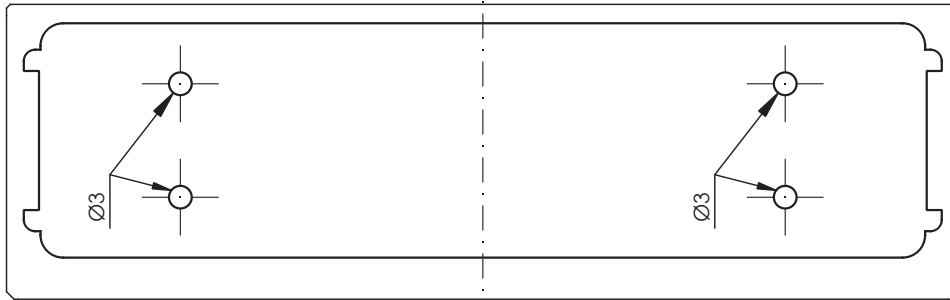


## MONTAGGIO SU PROFILI COMPLANARI

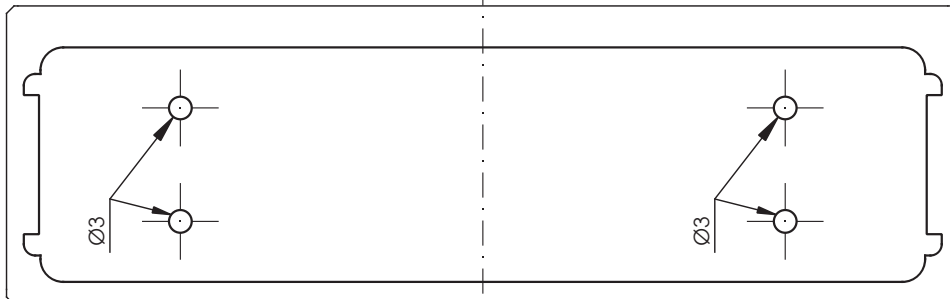
### Anta secondaria - Secondary door

Secondary mechanism  
only 10100-10200  
Meccanismo secondario  
solo 10100-10200



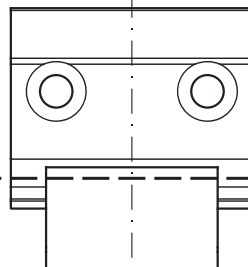
Main mechanism

Meccanismo principale



33  
Dimensione consigliata  
Recommended distance

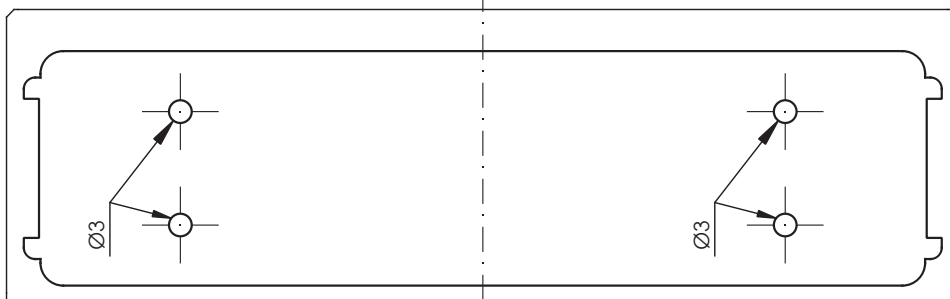
12



Filo telaio o anta secondaria  
Frame edge or secondary door

### Anta principale - Main door

Secondary mechanism  
only 10100-10200  
Meccanismo secondario  
solo 10100-10200

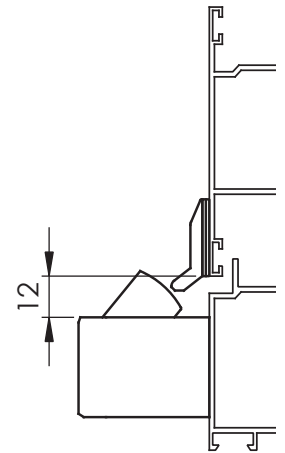


Main mechanism

Meccanismo principale

\* Forature passanti da realizzare per gli articoli 10900  
Through holes, to drill for articles 10900

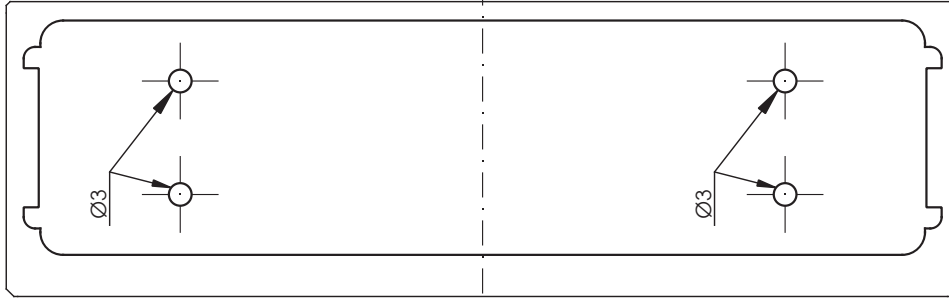
Asse TT - consigliato a 1115 (± 4mm) dal pavimento  
TT line - recommended height 1115 (± 4mm) from floor



## MONTAGGIO SU PROFILI CON SORMONTO

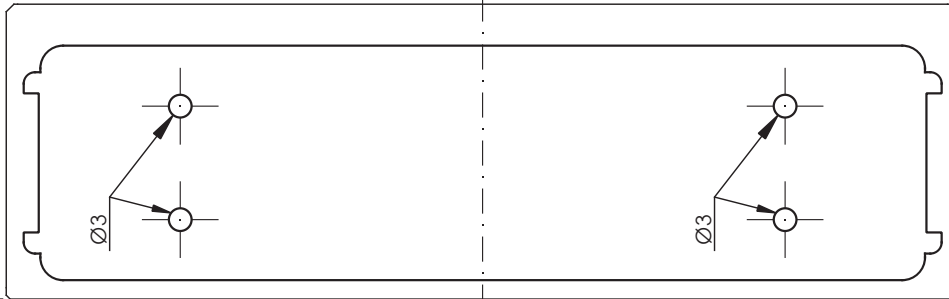
### Anta secondaria - Secondary door

Secondary mechanism  
only 10100-10200  
Meccanismo secondario  
solo 10100-10200



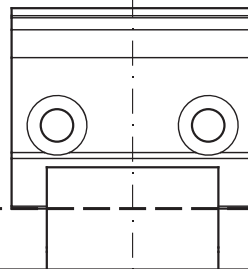
Main mechanism

Meccanismo principale



33  
Dimensione consigliata  
Recommended distance

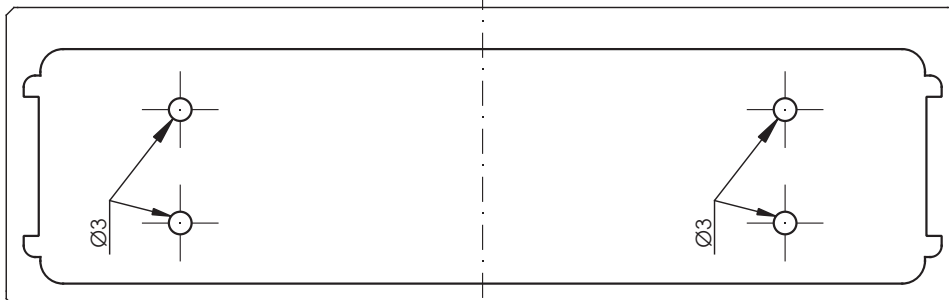
8



Filo telaio o anta secondaria  
Frame edge or secondary door

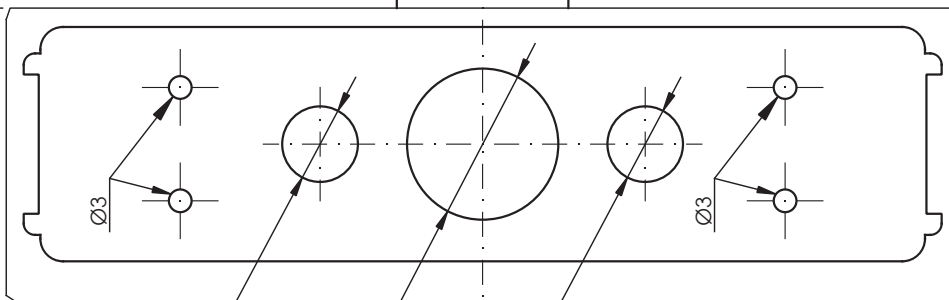
### Anta principale - Main door

Secondary mechanism  
only 10100-10200  
Meccanismo secondario  
solo 10100-10200



Main mechanism

Meccanismo principale



\* Forature passanti da realizzare per gli articoli 10900  
Through holes, to drill for articles 10900

Asse TT - consigliato a 1115 (± 4mm) dal pavimento  
TT line - recommended height 1115 (± 4mm) from floor

