



THESIGN™
DETAILS THAT LEAVE A MARK

An Antipanic Idea

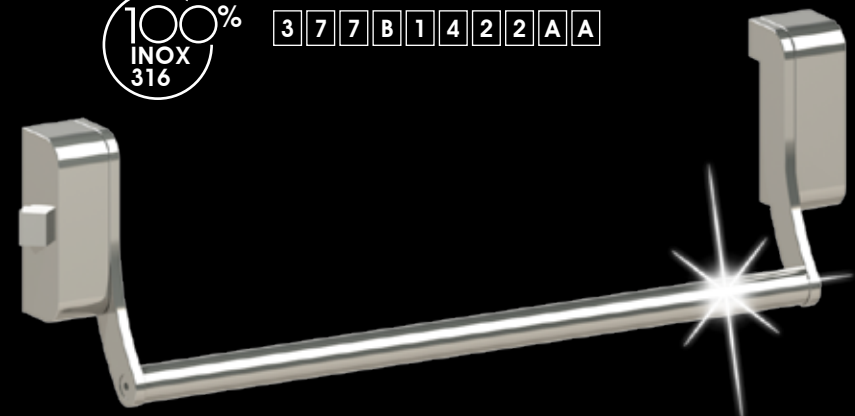
THESIGN™
DETAILS THAT LEAVE A MARK

ONE

100%
INOX
316

PUSH BAR
PANIC DEVICE
ENTIRELY INOX 316

3 7 7 B 1 4 2 2 A A

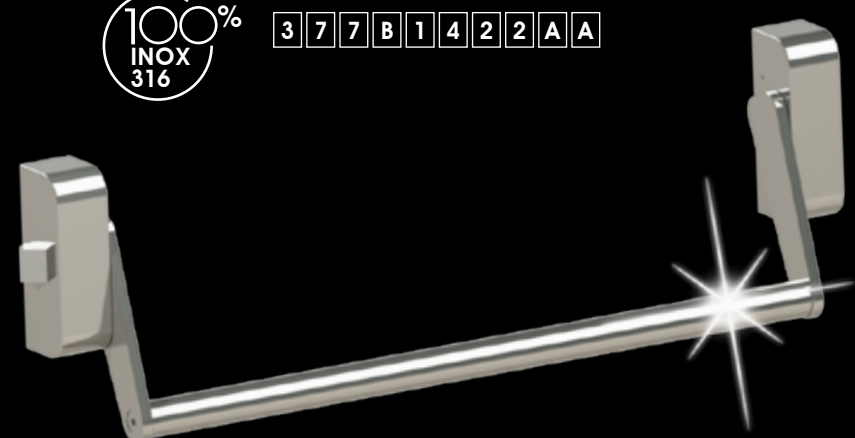


TWO

100%
INOX
316

PUSH BAR
PANIC DEVICE
ENTIRELY INOX 316

3 7 7 B 1 4 2 2 A A

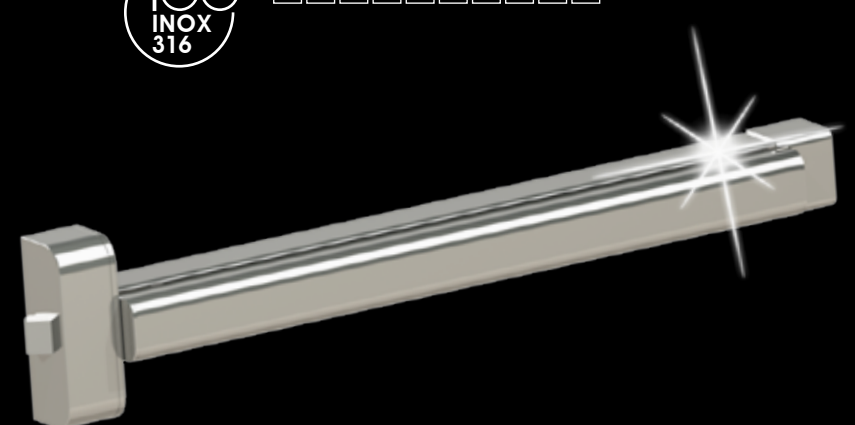


THREE

100%
INOX
316


TOUCH BAR
PANIC DEVICE
ENTIRELY INOX 316

3 7 7 B 1 4 2 2 B A



An Antipanic Idea



A photograph of a modern hallway. The walls are covered in horizontal wood planks. On the left wall, there is a white light switch and a white electrical outlet. A long, thin metal handle is mounted on the wall. At the end of the hallway is a door made of wood panels arranged in a geometric pattern. The floor is a light-colored carpet. The ceiling is white with a recessed light fixture.

DETAILS
THAT LEAVE
A MARK

*Challenges represent added value.
THESIGN is the winning result
of a deep work of research,
innovation, passion and determination,
all made in Italy.*

Carli



THESIGNTM
DETAILS THAT LEAVE A MARK

An Antipanic Idea

Design inspire the future.

THESIGN does not place any limits on the expressive possibilities of anyone, arising from the contamination with different places, cultures and styles.

This innovative and unique line of panic exit devices is constructed entirely out of 316 stainless steel, including all internal and external components.

This guarantees maximum functionality and a long lifetime even under the most extreme conditions. The rigorously streamlined design transmits strength and elegance and represents added value and an element of continuity.

Versatility, elegance, and efficiency in a single product.

DESIGN THAT INSPIRES

**THE ONLY ONE ENTIRELY MANUFACTURED
IN STAINLESS STEEL INOX 316.**



A CULTURE OF EXCELLENCE

Antipanic is a family business with deep roots and an entrepreneurial success story where experts and creative people design extremely innovative products, which are then produced by our team of highly qualified technicians.



ITALIAN EXCELLENCE

When "Made in Italy"

is a perfect synonym for excellence and Italian pride.

This is a mission we have always pursued, because the authenticity of Italian products is our company's strength and our way of life.

Our culture of excellence encompasses an organization geared toward quality, research, innovation, expertise, and the people who work together for the success of our projects.

All of our products are completely conceived, designed, and manufactured in Italy, which allows us to achieve an extremely high level of quality and control.

ONE

PUSH BAR
PANIC DEVICE
ENTIRELY INOX 316

100%
INOX
316

3 7 7 B 1 4 2 2 A A



TWO

PUSH BAR
PANIC DEVICE
ENTIRELY INOX 316

100%
INOX
316

3 7 7 B 1 4 2 2 A A

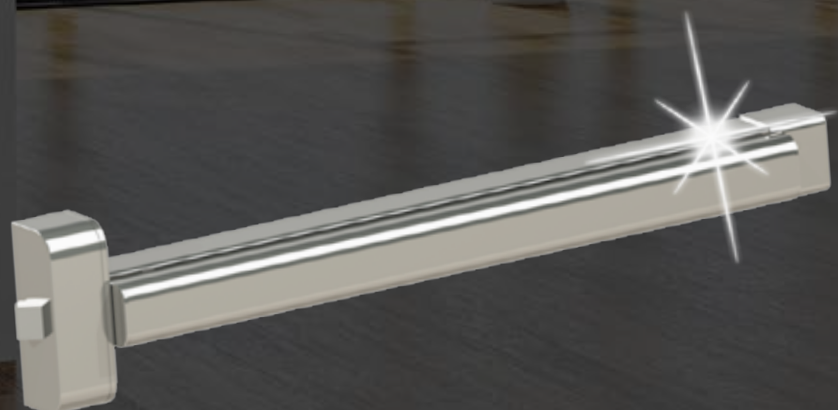


THREE

TOUCH BAR
PANIC DEVICE
ENTIRELY INOX 316

100%
INOX
316

3 7 7 B 1 4 2 2 B A



ONE

100% INOX 316 • REVERSIBLE • FIRE RATED • 1200 mm HORIZONTAL CROSS ARM



100%
INOX
316



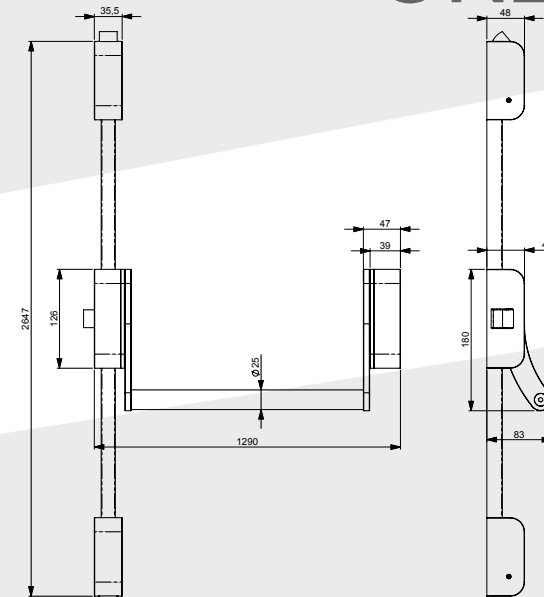
COD ART. 10100
1 LOCKING POINT

COD ART. 10102
2 LOCKING POINTS

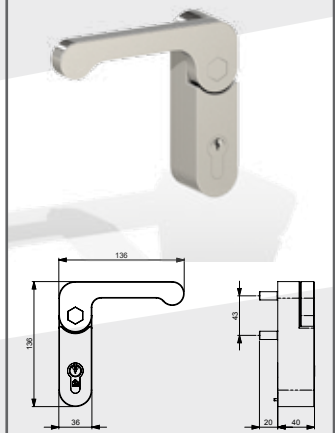
COD ART. 10103
3 VERTICALS LOCKING POINTS

COD ART. 10103LAT
3 LATERALS LOCKING POINTS

ONE



FITTING FOR ALL PRODUCTS



COD ART. 10900
OUTSIDE ACCESS DEVICE

TWO

100% INOX 316 • REVERSIBLE • FIRE RATED • 1200 mm HORIZONTAL CROSS ARM



100%
INOX
316



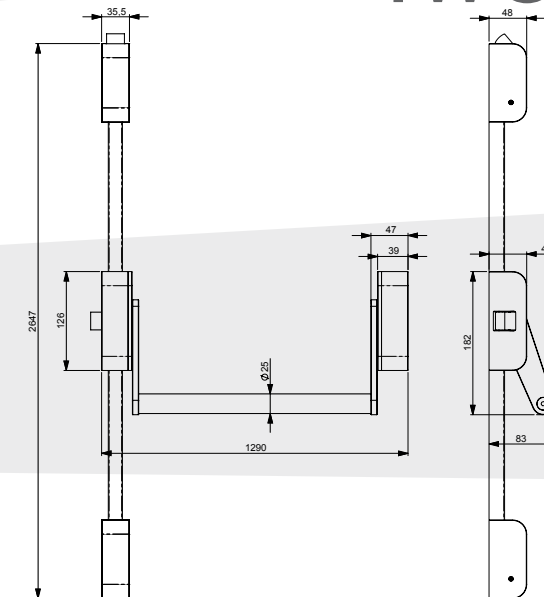
COD ART. 10200
1 LOCKING POINT

COD ART. 10202
2 LOCKING POINTS

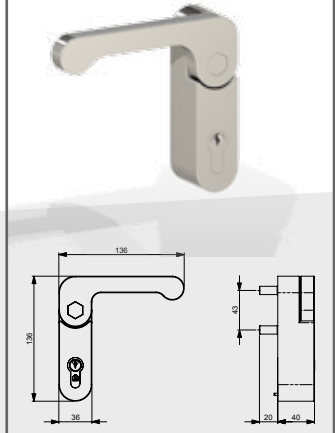
COD ART. 10203
3 VERTICALS LOCKING POINTS

COD ART. 10203LAT
3 LATERALS LOCKING POINTS

TWO



FITTING FOR ALL PRODUCTS



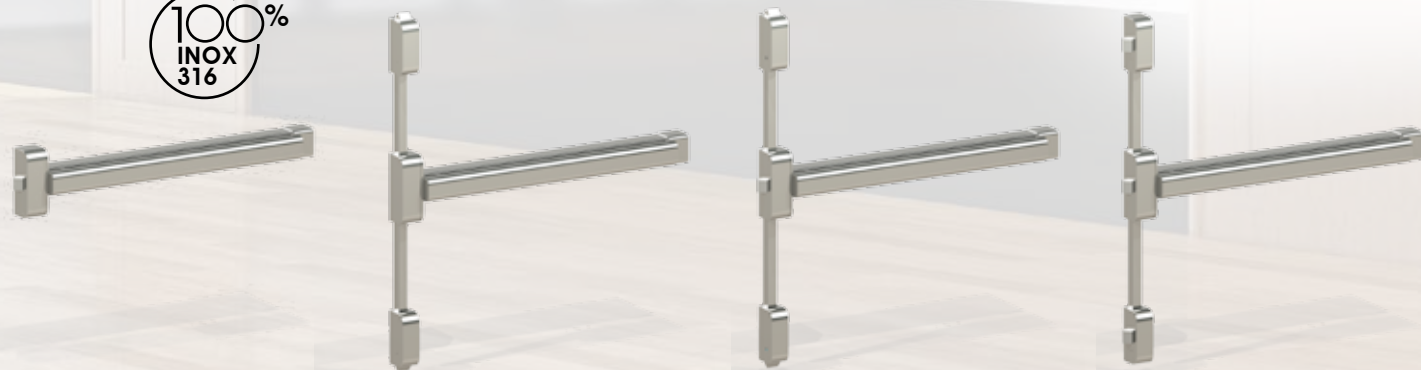
COD ART. 10900
OUTSIDE ACCESS DEVICE

THREE

100% INOX 316 • REVERSIBLE • FIRE RATED • 1200 mm HORIZONTAL CROSS ARM



100%
INOX
316



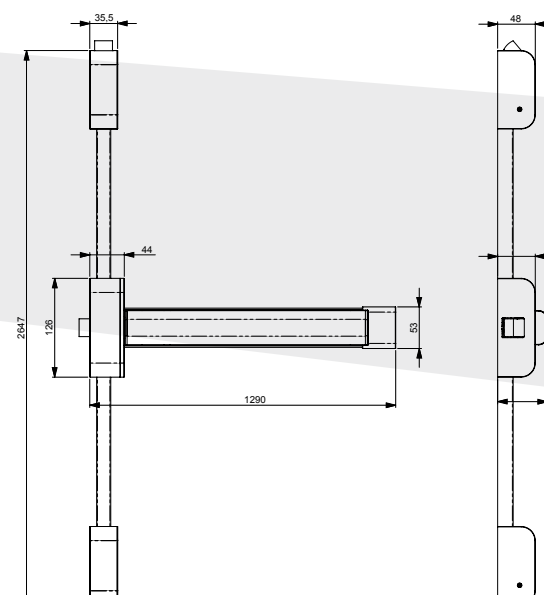
COD ART. 10300
1 LOCKING POINT

COD ART. 10302
2 LOCKING POINTS

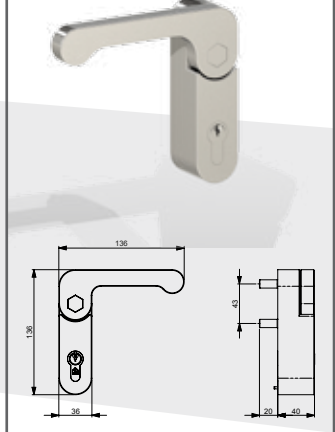
COD ART. 10303
3 VERTICALS LOCKING POINTS

COD ART. 10303LAT
3 LATERALS LOCKING POINTS

THREE



FITTING FOR ALL PRODUCTS



COD ART. 10900
OUTSIDE ACCESS DEVICE



Jo Stockton

THESIGNTM

DETAILS THAT LEAVE A MARK

An Antipanic Idea

thesign-antipanic.com



antipanic
antipanic.it